

Features

- Support DALI-2 DT8 dimming mode
- No polarity of input
- 10-level current output can be realized by DIP-switch
- Soft dimming and flicker-free at any brightness, meets the new requirements of ErP certification
- Using HPC patented technology, at any dimming level, the brightness of the luminaires is the same
- Dimming range 1%~100%, output current accuracy 2%
- Standby power input < 0.5W, meets the requirements of ErP certification
- Intelligent LED hot-plug protection function
- Suitable for STUCCHI standard housing
- SELV and Class III design, suitable for use inside of the luminaire
- Compliance with CE, DALI-2 and other certifications
- IP20 protection grade, indoor use
- Nominal life-time up to 50,000 h

Interfaces

- DALI-2(DALI-2 DT8)

Functions

- Protective features
(short-circuit, overload, no-load, hot plug-in protection)

Suitable for lights

- Suitable for DC track light

Typical applications

- LED indoor lighting
- LED office lighting
- LED architectural lighting
- LED commercial lighting

- **DALI-2 Constant Current LED DT8 Driver**
- **Suitable for Input supply 48Vdc.**
- **Multiple current selection through dip switch.**
- **Output Current: 150 - 700mA**
- **Flicker Free: O/P Ripple current < 10%**
- **Output Wattage : 30W Max**
- **Output voltage range of 12-42Vdc**
- **TO be used with Magnetic track housing**
- **Supports 3-Wire system (Common Anode)**
- **Suitable For Dry Locations**
- **Application**
- **- Magnetic track lights**

General Specifications

Rated Input Voltage	48Vdc (+/-0.5V)
Operating Input Voltage Range	48Vdc
Input Current	<0.67 @ 48Vdc
Input Power	33W
Efficiency (Typical)	92%
Driver Type	Constant Current DALI-2
Output Current	700mA ±5%, 600mA ±5%, 500mA ±5%, 400mA ±5%, 350mA ±5%, 300mA ±5%, 250mA ±5% 200mA ±5%, 175mA ±5%, 150mA ±5%, *Refer DIP switch Table for O/P current selection
Output Voltage Range	12-42Vdc
Output Power	30W
Number of Output Channels	2 Channel
Output Type	Class II
Dimming Controller Type	DALI-2
Ambient Operating Temperature Range	-10°C to 45°C
Max. Case Temperature	NA (Ambient operating temperature should not exceed specified limits)
Protections	Output Short Circuit : Auto Recovery (HICCUP Mode) Output Open Circuit : Auto Recovery (HICCUP Mode) Output Overload : YES
certifications	CE, RoHS, DALI-2, EN61347-1, EN61347-2-11, En55015, EN61000-4-2 IEC 62386-101(DALI-2), IEC 62386-102(DALI-2), IEC 62386-207(DALI-2), IEC 62386-209(DALI-2)
Withstand Voltage	I/P-DALI: 1500V AC, O/P-DALI: 1500V AC.
Isolation resistance	I/P-O/P: 100MΩ / 500Vdc / 25°C / 70% RH
Life	50,000 Hours @40°C
Warranty	5 Years
Weight	0.012 Kg

Note : Suitable for indoor application only
when the driver is used with the luminare, the EMC of the whole luminare needs to be tested.

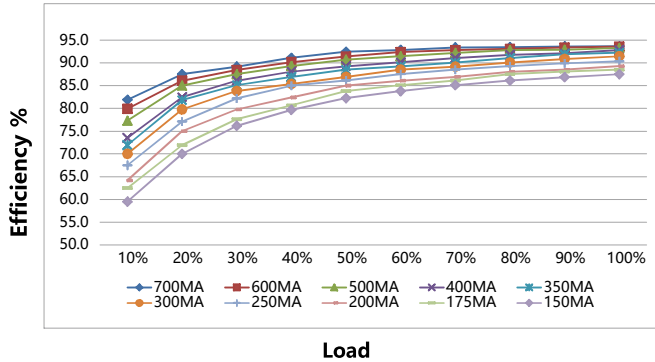
DIP Switch Chart :

Output			1	2	3	4
Prated(W)	Irated(mA)	Voltage(Vdc)				
6.30	150	12-42	--	ON	ON	ON
7.35	175	12-42	ON	--	ON	ON
8.40	200	12-42	--	--	ON	ON
10.50	250	12-42	--	ON	--	ON
12.60	300	12-42	--	--	--	ON
14.70	350	12-42	ON	ON	ON	--
16.80	400	12-42	--	--	ON	--
21.00	500	12-42	--	ON	--	--
25.20	600	12-42	ON	--	--	--
29.40	700 ★	12-42	--	--	--	--

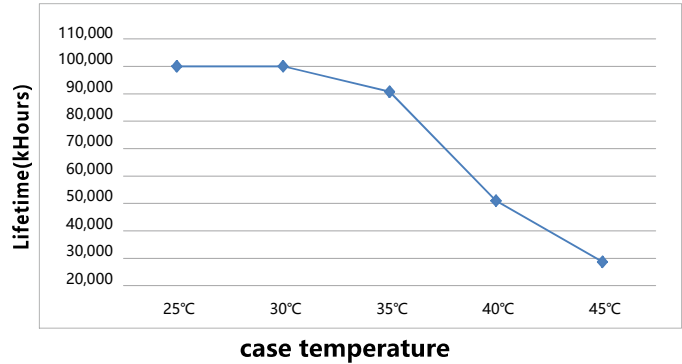
Remark: ★ this current is factory default.
-- this Switch is off.

Fulham extends a limited warranty only to the original purchaser or to the first user for a period of **05 years @ Ta 40°C** from the date of manufacture when properly installed and operated under normal conditions of use. For complete terms and conditions, please reference the Fulham Product Catalog (www.fulham.com). Due to a program of continuous improvement, Fulham reserves the right to make modifications or variations in design or construction to the equipment described.
© Fulham Company Limited, All Rights Reserved.

Efficiency vs. Load

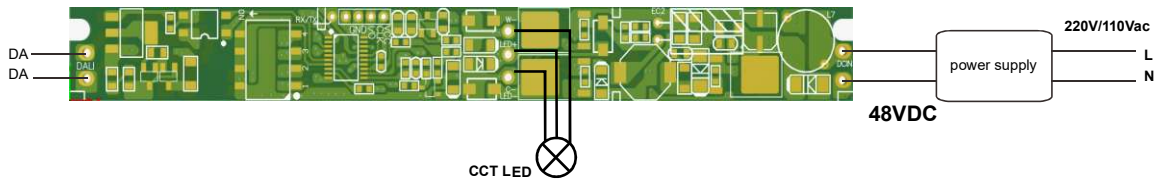


Lifetime vs. case temperature



DALI dimming application

Wiring diagram



Remarks:

- Standard DALI control line voltage range: 9.5V to 22.5V, type 16V.
- The two DALI control lines polarity-reversible
- Max. 64 DALI drivers per DALI control line.
- The maximum distance length of the DALI control line is 300m at 2×1.5mm
- DALI bus can be wired together with any mains voltage cables, but separate wiring is recommended
- The configuration parameters of the driver can be set through the DALI configuration tool or DALI application controller during installation, such as setting device address, group address, power-on level, bus-failure level, scene level, fade time, dimming curve, etc.

Please refer to the table below

Cable size	Distance
2× 0.50mm ²	max.100m
2× 0.75mm ²	max.150m
2× 1.00mm ²	max.200m
≥ 2× 1.50mm ²	max.300m

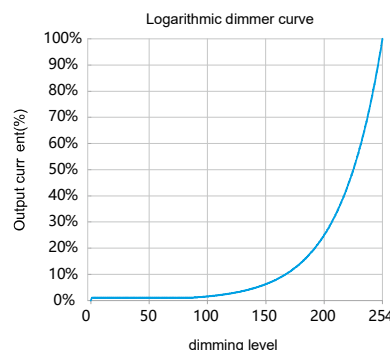
Power-on level :

When the driver is in DALI-2 dimming mode, the factory default level after each power-on is the brightest

The power-on level can be set through the DALI configuration tool or DALI application controller during installation, and can be set to memory or fixed any brightness (such as off, darkest, 50%, etc.).

Note: The recommended setting for the default factory power-on level of the DALI-2 driver is the brightest in the DALI-2 standard.

Dimming curve

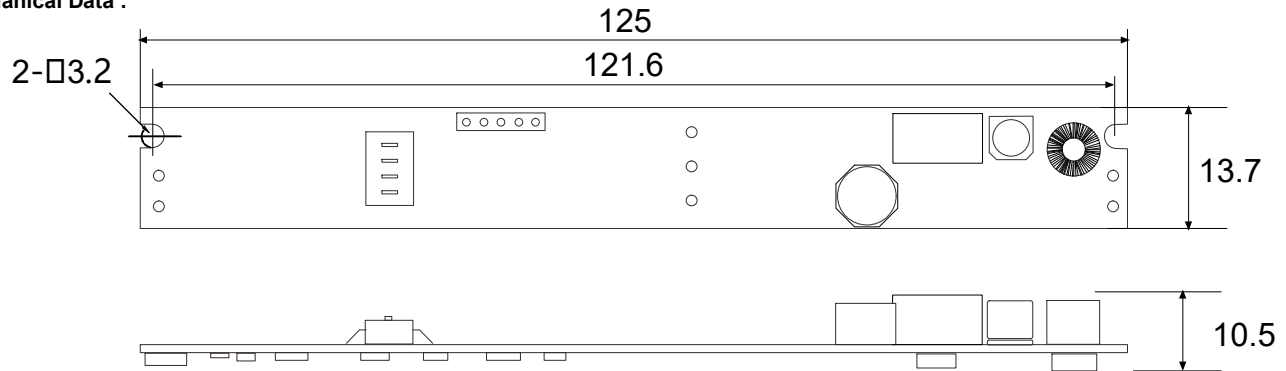


Remarks: The dimming curve can be selected by DALI configuration.

The default is logarithmic dimming curve

Fulham extends a limited warranty only to the original purchaser or to the first user for a period of **05 years @ Ta 40°C** from the date of manufacture when properly installed and operated under normal conditions of use. For complete terms and conditions, please reference the Fulham Product Catalog (www.fulham.com). Due to a program of continuous improvement, Fulham reserves the right to make modifications or variations in design or construction to the equipment described. © Fulham Company Limited, All Rights Reserved.

Mechanical Data :



Note : All Dimensions are in mm.

Tolerance=±0.5mm

Installation note

LED Hotplug-in

- Hot plug-in is not supported due to residual output voltage of > 0 V.
- If a LED load is connected the device has to be restarted.
- Restart can be achieved by re-powering the driver or executing a on/off command (action) through the control interface (DALI).

Wiring guidelines

- All connections must be kept as short as possible to ensure good EMI behaviour.
- Max. length of output wires is 0.5 m.
- Incorrect wiring can damage LED modules.

Installation requirements

- The driver should be installed in a dry, acid-free, oil-free, fat-free environment.
- The installation ambient temperature of the driver shall not exceed the value of Ta at any time.
- Please be careful not to damage the electronics during assembly.
- All electronic components shall not be squeezed after assembly.

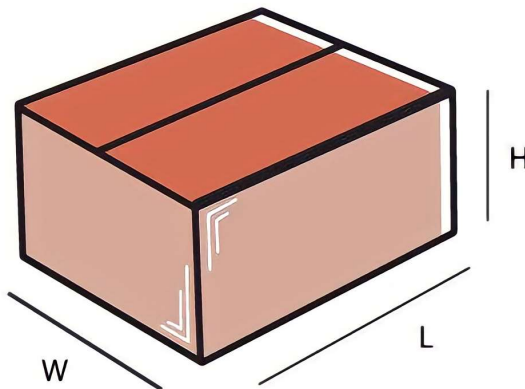
Mounting screw specifications and torque

- Max. torque at the clamping screw: 0.5 Nm / M4

Replace LED module

1. Mains off
2. Remove LED module
3. Wait for 5 seconds
4. Connect LED module again

Packaging



Master carton

OUTER DIMENSION		
L	W	H
465 mm	325 mm	105 mm
Net Weight	Gross Weight	QUANTITY
2.62 kg	3.17 kg	200 pc.

Installation Instructions:

Connect Wires as per details given on the Driver Screen. Keep proper ventilation around the LED Driver and do not stack any object on it. Also a 10-15 cm clearance must be kept when the adjacent device is a heat source. Do not exceed the declared Hot spot temperature (Tc max) under any circumstances.

Fulham extends a limited warranty only to the original purchaser or to the first user for a period of **05 years @ Ta 40°C** from the date of manufacture when properly installed and operated under normal conditions of use. For complete terms and conditions, please reference the Fulham Product Catalog (www.fulham.com). Due to a program of continuous improvement, Fulham reserves the right to make modifications or variations in design or construction to the equipment described.
 © Fulham Company Limited, All Rights Reserved.